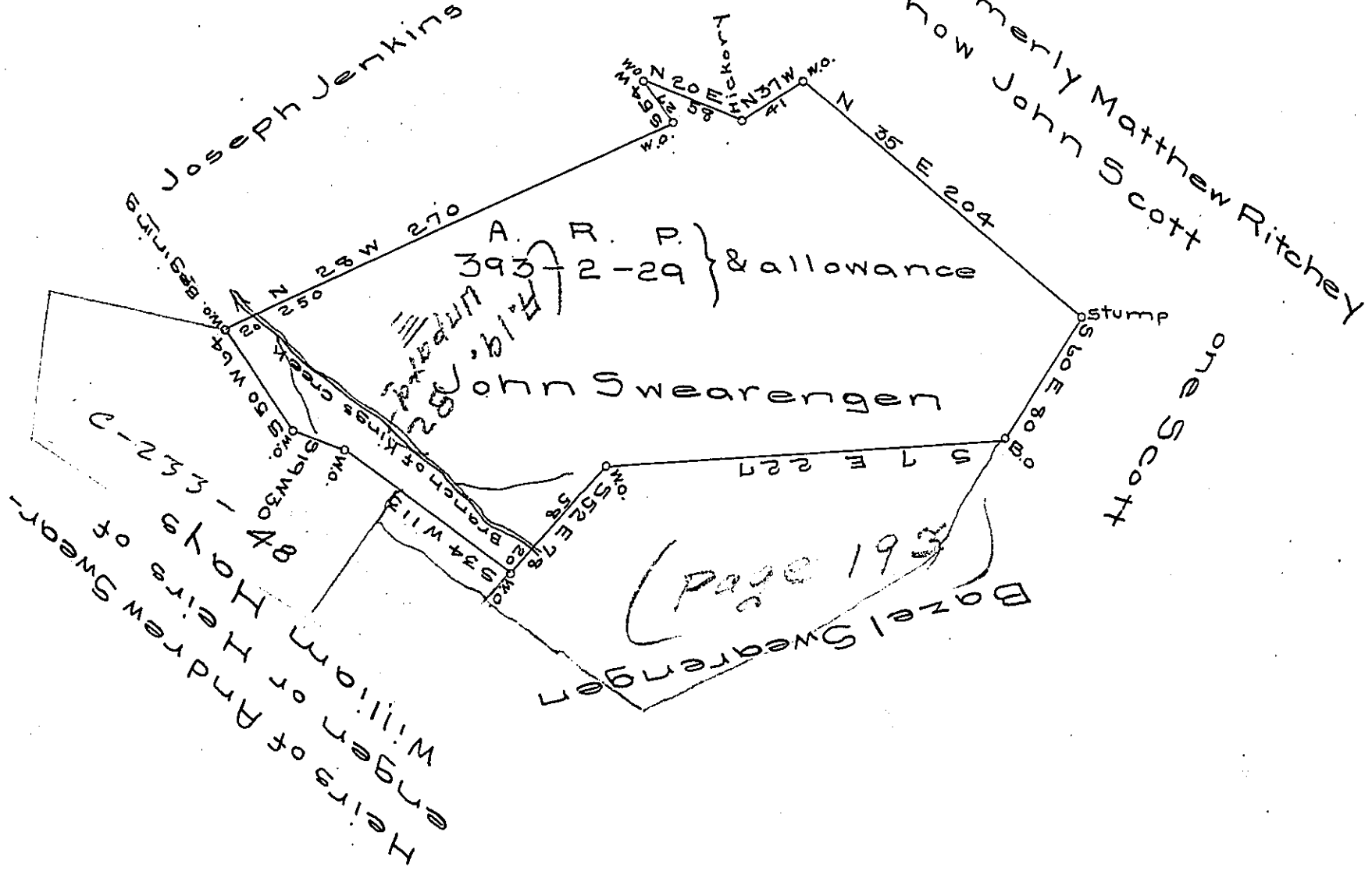


John H. Reddick

Formerly Matthew Ritchey  
now John Scott

Joseph Jenkins



The above is a draught of a certain tract of land situated on the waters of Kings creek formerly in Washington County now in Hanover township in Beaver County surveyed for John Swearengen son & heirs of Samuel Swearengen dec<sup>d</sup> September 23<sup>rd</sup> 1828 in pursuance of a warrant granted to said Samuel Swearengen for three hundred acres of land at the place aforesaid including an improvement and dated March 24<sup>th</sup> 1788 containing 393 acres 109 perches & allowance of six percent for roads.

Henry Davis D.S.

To Gabriel Hiester Esq<sup>r</sup> }  
Surveyor General

*IN TESTIMONY* that the above is a copy of the original remaining on file in the Department of Internal Affairs of Pennsylvania, made conformably to an Act of Assembly approved the 16th day of February 1833, I have hereunto set my hand and caused the Seal of said Department to be affixed at Harrisburg, this twenty-eighth day of February 1907.

*Leach B. Brown*  
Secretary of Internal Affairs.